

# Lifepo4 Battery LP-48300 Series

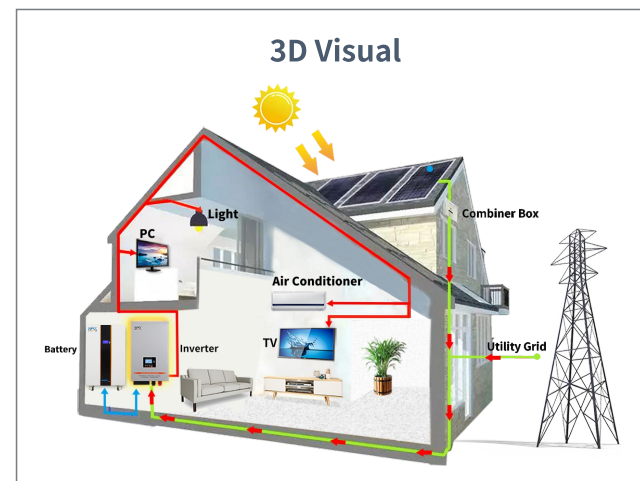
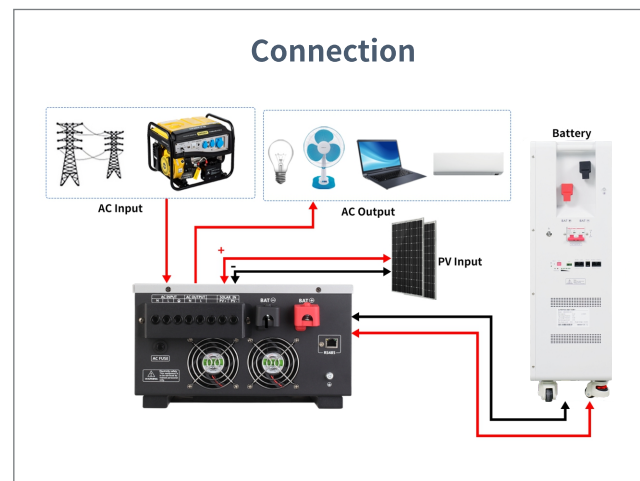


## Power Wall

● 300AH 51.2V 15.36KWH

● 200A Discharge Current

● 200A Charge Current



## Technical Specification

Model:	LP-48300
Rate Capacity	300AH
Energy Power	15.36KWH
Type	Lifepo4 Battery
Life Cycles	6000times
Rate Voltage	51.2VDC
High Voltage Protection	56VDC
Low Voltage protection	44.8VDC
Charge Voltage	55.2VDC
Max Charge Current	200A
Max Discharge Current	200A
NW	118.32KG
Product Size	830x505x250mm
GW	135.38KG
Packing Size	930x565x440mm

\*Product Specifications Are Subject To Change Without Further Notice